


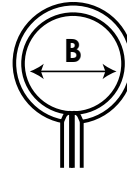
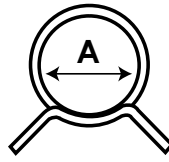


# CLAMPS & CLIPS

## SPRING CLIPS



-  APPLICATION For fitting to Ausquip LPG Hoses.
-  MATERIAL Chrome plated
-  COLOUR Trivalent Blue

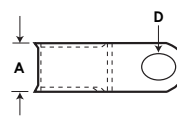
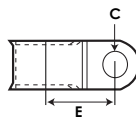
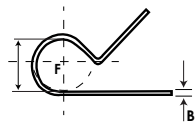


PART NO.	BAND THICKNESS	BAND WIDTH	A I.D CLOSED	B I.D OPEN
	MM	MM	MM	MM
I-004	0.6	6.0	8.5	10
I-005	0.6	8.0	9.2	11
I-006	0.7	8.0	10	12
I-007	0.8	8.0	10.5	12.3
I-009	0.8	8.0	12	14.1
I-012	0.8	10	14	16.3
I-015A	1.0	12	16.5	19.6
I-016	1.0	12	18	21.6
I-019	1.4	15	22	26.3

OTHER SIZES AVAILABLE ON REQUEST

## PIPE RETAINING CLIPS

-  MATERIAL Stainless Steel
-  COLOUR Natural



PART NO.	A WIDTH	B THICKNESS	C HOLE 1 DIAMETER	D HOLE 2 DIAMETER	E	F RADIUS
	MM	MM	MM	MM	MM	MM
ED111	13.1	0.6	6.5	6.5 x 9	16	11.1
H909	13.1	0.6	6.5	6.5 x 9	16	13
ED143	15	0.8	6.5	6.5 x 9	18	14.3
ED159	15	0.8	6.5	6.5 x 9	18	15.9
ED191	15	0.8	6.5	6.5 x 9	20	19.1

RUBBER AND PVC COATED CLIPS ALSO AVAILABLE